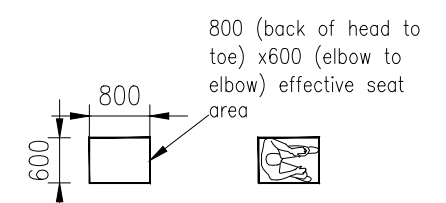
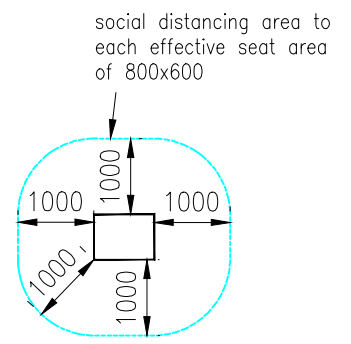


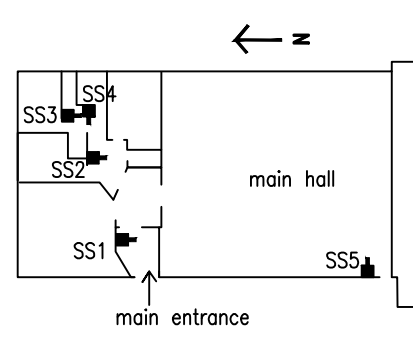
LEGEND



ROS 1 Removal/Optional Seat 1

Seats ROS 1–ROS 5 to be placed in position when seats 1–50 have been occupied
 At the end of the event Seats ROS 1–ROS 5 to be vacated first and removed from the hall prior to seats 1–50 being vacated

TOTAL NUMBER OF SEATS = 50 + 5ROS = 55Nr (PLUS SPEAKER)



LOCATION OF SANITISER STATIONS SS1–SS5 SHOWN THUS: SS1■



CHAIR LAYOUT FOR MAIN HALL BASED ON 1m SOCIAL DISTANCING
 TARPORLEY COMMUNITY CENTRE